

Canovate has been selected as the main supplier of rack systems for one of the biggest development projects in Doha called " Msheireb Downtown Doha "



Msheireb Downtown Doha is a planned city in Doha, Qatar. Located in the downtown area of Qatar's capital city, it is set to occupy 310,000 sq m with the total cost of construction amounting to approximately \$5.5 billion. It was launched in six phases by Msheireb Properties, a subsidiary of Qatar Foundation.

As a flagship project for Msheireb Properties', the aim of the project to preserve the historical downtown of Doha. It will revive the old commercial heart of the city through a new architectural language that is based on community living.

This ambitious project requires state of art IT infrastructure capacity by the directives and support of Qatar Foundation to cope up with ever increasing data processing requirements. The proposed IT infrastructure should support all services like Data, WIFI, IRS, BMS, CCTV and ACS.



Canovate rack systems provided a versatile solution for all these different applications which required high density cabling management. With the increased usage of fiber optic cabling in IT applications, the essential requirement is to maintain the optimal bend radius and limit physical impact on the cable while preventing stretching, twisting and snagging. Any cable deformation will have severe effects on the network performance. Canovate Patch Rack systems solved these issues by forming the fundamental frame for managing and distribution of data cabling within dense cabling environments. Patch Rack is a modular open frame providing outstanding accessibility, mounting for 19" panels and dedicated cable channels at the front and rear on each side of the frame for best cable management.



FOLLOW US !



www.canovate.com

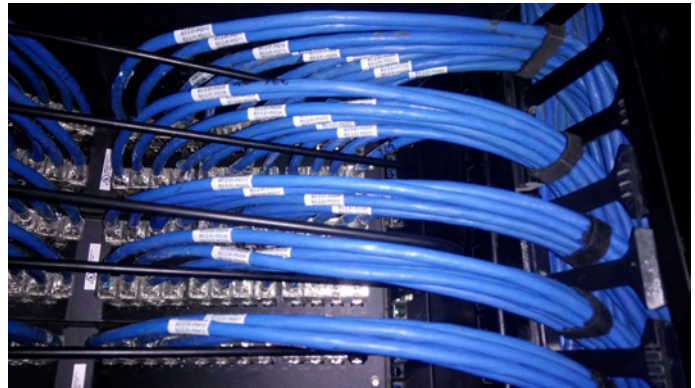
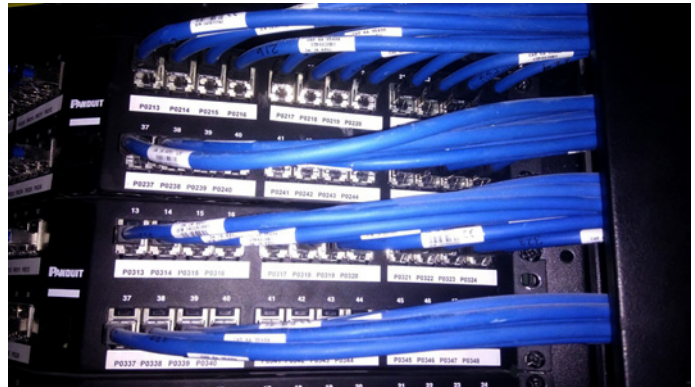
Canovate Istanbul
Eksioglu Mah. Atabey Cad.
No:12 Cekmekoy,
Istanbul, TR 34794
T: +90 (216) 484 22 22
F: +90 (216) 429 02 02

Canovate UAE
Saif Zone Q4-272
P.O BOX: 121650
Sharjah, Dubai
T: +971 6 5528523
F: +971 6 5528522

Canovate America
4210 L.B. McLeod Rd
Suite 111-113
Orlando, FL 32811
T: +1 407-286-0178
F: +1 407-914-2845

Canovate Hellas I.K.E
VAT: 800886889
Adress: Argiri G.10
Likovrisi, Athens 14123
Greece
T: +30 6944 571000

Together with our system integration partner “Mannai ICT” we installed more than 300 pieces of Patch Rack systems for various applications in this project.



Apart from Patch rack systems; various types of Server, Network and Wall-mount rack systems were installed for different applications.

Canovate is proud to be able to take part in one of the biggest development projects in Qatar and provide value to its partners in the region.



FOLLOW US !



www.canovate.com

Canovate Istanbul
Eksioglu Mah. Atabey Cad.
No:12 Cekmekoy,
Istanbul, TR 34794
T: +90 (216) 484 22 22
F: +90 (216) 429 02 02

Canovate UAE
Saif Zone Q4-272
P.O BOX: 121650
Sharjah, Dubai
T: +971 6 5528523
F: +971 6 5528522

Canovate America
4210 L.B. McLeod Rd
Suite 111-113
Orlando, FL 32811
T: +1 407-286-0178
F: +1 407-914-2845

Canovate Hellas I.K.E
VAT: 800886889
Adress: Argiri G.10
Likovrisi, Athens 14123
Greece
T: +30 6944 571000